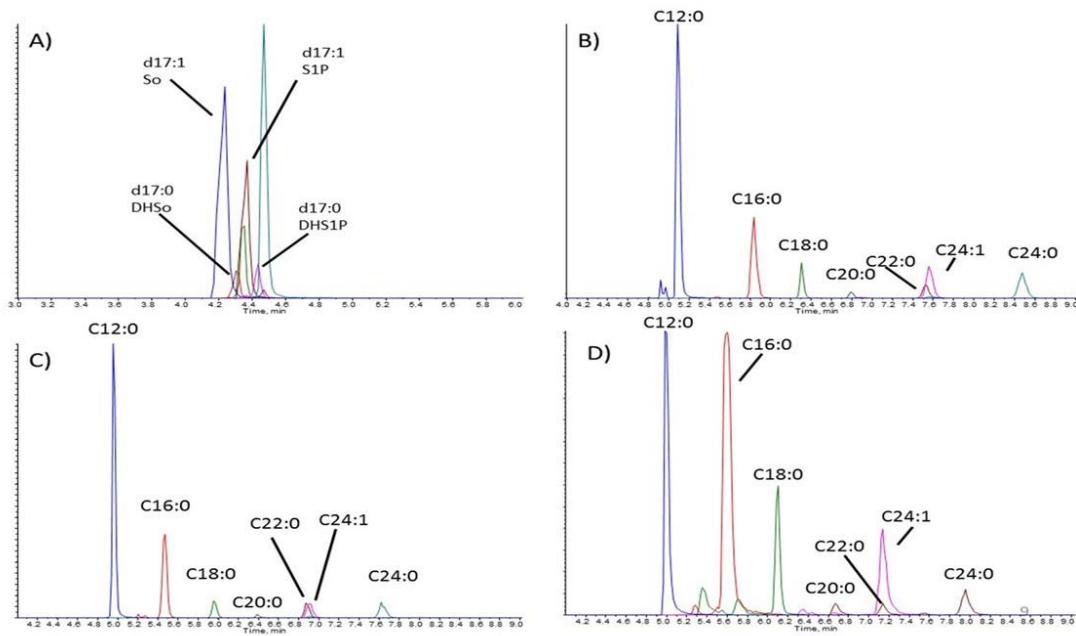


Supplemental Figure S1



Supplemental Figure S1. LC-MS/MS chromatogram of individual species multiple reaction monitoring for reverse phase separation of A) long-chain bases and 1-phosphates, B) d18:1 ceramides, C) d18:1 monohexosylceramides, and D) d18:1 sphingomyelins. The long-chain bases include sphingosine, dihydrosphingosine, and sphingosine-1-phosphate).